

Chelsie Rimel
Mr. Hricik
ENG 162-W2
29 July 2013

“How to Apply Natural Looking Make-up”

Her Royal Highness, Catherine, the Duchess of Cambridge is the epitome of a classy lady. Always looking fresh, clean, and beautiful, Catherine takes great pride in her outwards appearance. But when you look at a picture of Catherine, do you notice that she is wearing make-up? Probably not. This is because Catherine wears make-up that is natural looking that enhances her natural features. Make-up is not meant to create a whole new facial palette, but to add to one’s natural beauty. With so many different products and brands, it is easy for a woman to wonder how to apply the perfect amount of make-up. Fear not, ladies! It is a lot easier than one would anticipate. With these few simple steps, I will explain how to create a fresh facial palette that is beautiful and natural.

Supplies

- Facial Moisturizer with SPF 15
- Liquid Foundation
- Finishing Powder
- Bronzer
- Blush
- Brown/Bronze Eye Shadow
- Eye Liner
- Mascara
- Powder Brush
- Bronzer Brush
- Blush Brush
- Lip Gloss

Estimated Cost and Time

The total cost can vary. Department store make-up is much more expensive than drugstore make-up. However, that does not mean that it is always better quality. I have tested a various number of different products from different places. All of my favorite make-up brands are available at drugstores and costs about \$40 total. It is all about experimenting and finding out which brands work best for your skin tone and skin type. It only takes about 10 minutes to complete this process. With practice, it will become closer to 5 minutes.

Directions

Face and Foundation

1. Clean face with warm water and soap.
2. Apply moisturizer. Make sure moisturizer has at least SPF 15 to protect skin.
3. Apply foundation.
 - Squirt into hand and apply on chin, cheekbones, and forehead.
 - Blend in with fingertips, blend upwards.
 - **TIP:** Be sure to blend along hairline, jaw line, and neckline thoroughly to prevent foundation lines. Remember, it is not supposed to look like you are wearing make-up!



Above: Applying foundation.

4. Apply finishing powder with large brush.
 - Apply with a circular motion all around face.
 - Finishing powder helps set the foundation and keeps your make-up fresh for a longer period of time since it prevents oil and shine.
 - **TIP:** When picking a brush, look for a large brush with long and soft bristles. Also, clean all make-up brushes with warm water and soap every 3 months to keep them clean and preserve their longevity.



Left: Applying powder.



Right: A good example of a powder brush.

5. Apply blush with blush brush.

- Use light upward strokes from the apples of the cheeks along your cheek bones.
- With blush, less is more. Be sure not to apply too much.
- **TIP:** When selecting a blush brush, look for a brush that is angled with shorter bristles that give way to longer bristles.



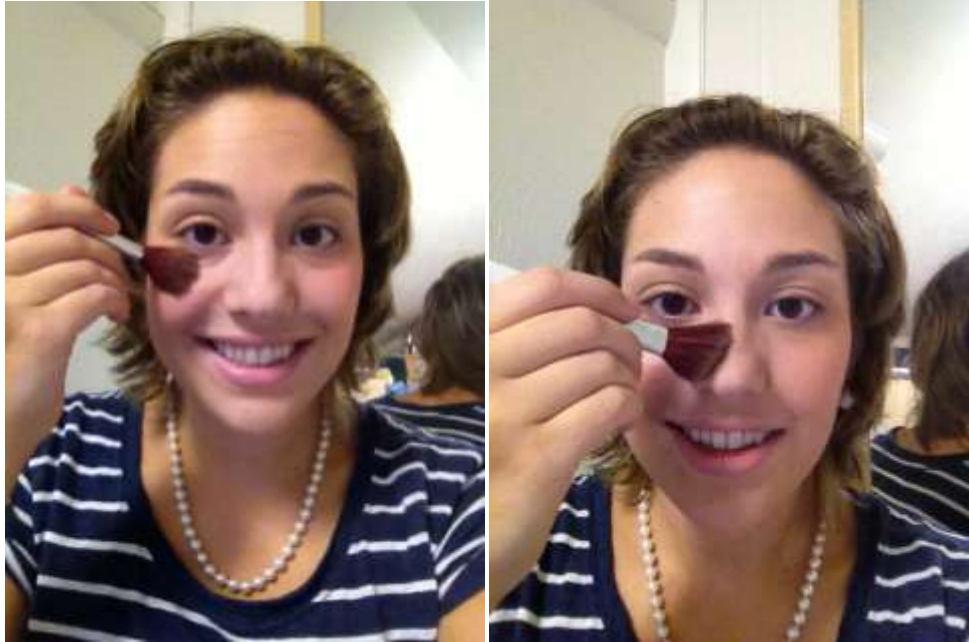
Left: Applying blush.



Right: A good example of an angled blush brush.

6. Apply bronzer.

- Bronzer is used to contour and make features like your cheek bones and jaw line pop (in a good way) with a warm and shimmery glow.
- First, apply with a bronzer brush along your cheek bones, just above your blush.
- Then, dust along the bridge of your nose and above your eye brows.
- Finally, dust along your jaw line.
- **TIP:** A bronzer brush should be a smaller version of a blush brush: an angled brush with shorter bristles that give way to longer bristles.



Left: Applying bronzer on cheeks. Right: Applying bronzer on nose.

Eyes

1. Apply eye shadow.
 - Natural, deep, warm colors like brown's, gold's, green's, navy's, grey's, and black's always work well to create a smokey eye that is not overdone.
 - My favorite is just a brown/bronze eye shadow with a bit of shimmer to draw attention to your eyes for all of the right reasons.
 - Using an eye shadow brush, apply shadow on eye lid and modestly in the crease of your eye.
 - **TIP:** Eyes are a great place to experiment with different colors and shades. You are not limited to just one color. For example: applying silver shadow in the corners of your eyes and blending with a darker black on the lid will make a flawless smokey eye.

Below: Applying eye shadow.



2. Apply eye liner.

- Using black eyeliner, trace the inside of your top eyelid with the pencil.
- Take your time while doing this, that way you do not apply the liner too thick.



Above: Applying eye liner.

3. Apply Mascara.

- Apply black mascara to the top and bottom eyelashes.
- **TIP:** Applying 2-3 coats of mascara will lengthen and thicken the look of lashes adding a more dramatic and flirty flair.



Above: Applying mascara.

Lips

1. Apply lip gloss.

- It is your personal preference as to what color lip gloss you want to apply. Clear gloss is perfectly fine. Personally, I love a lip gloss with a hint of red to add color to your face. Red lip gloss compliments a warm and healthy glow.



Above: Applying lip gloss.

Remember:

- This takes practice! Applying the make-up can be difficult, especially for first time users. However with a bit of time, you will be a pro!
- Experiment with everything! I cannot say this enough. Experiment with brands, colors, and brushes. What works well for one woman, may not work well for another. That is why there are so many different brands and choices when it comes to cosmetics.
- Always clean up your make-up before bed. **DO NOT FALL ASLEEP WITH MAKE-UP ON!** This is terrible for your skin and can cause breakouts. Wash with warm water and soap or cleanser. For stubborn eye make-up, buy make-up removing pads to make eye liner and mascara clean up a breeze.
- Look up You-Tube and blog tutorials. Many beauty bloggers religiously post blogs and videos reviewing products and application how-to's. Plus, many blogs allow readers to ask the bloggers questions. The internet is a great resource to learn more about cosmetics.

And here's your finished product:

